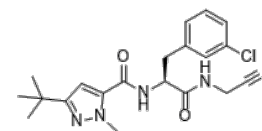


Product Name : CatL inhibitor 1
Cat. No. : PC-23817
CAS No. : 225120-65-0
Molecular Formula : C₂₀H₂₄ClN₅O₂
Molecular Weight : 401.90
Target : Cathepsin
Solubility : 10 mM in DMSO



CAS: 225120-65-0

Biological Activity

CatL inhibitor 1 is a potent, selective inhibitor of cathepsin L (CatL) with pIC₅₀ of 7.9, >10-fold selective over CatL2 and >100 fold over CatS/K/B.

References

Asaad N, et, al. Bioorg Med Chem Lett. 2009 Aug 1;19(15):4280-3.

Caution: Product has not been fully validated for medical applications. Lab Use Only!

E-mail: tech@probechem.com